

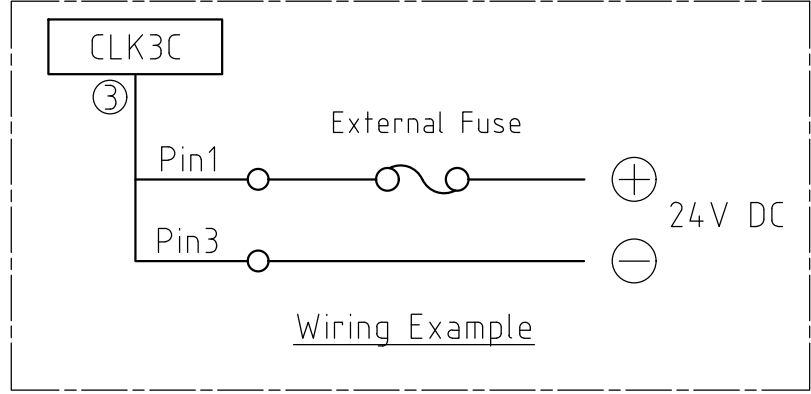
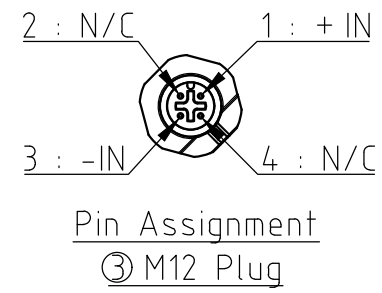
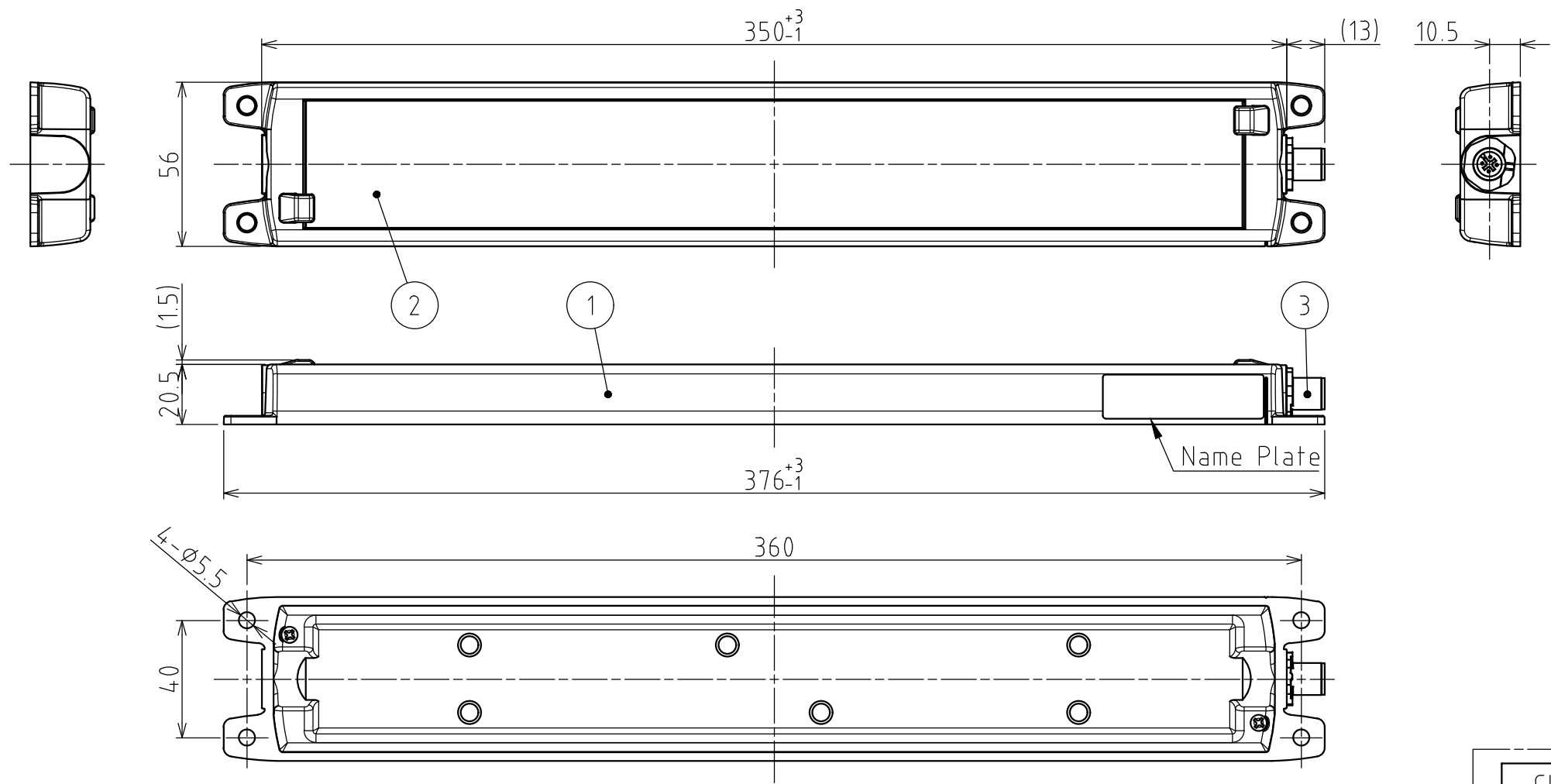
SPECIFICATIONS

[General Specifications]

Product Name	LED Work Light	
Model	CLK3C-24SG	
Color Code	CD	CN
Luminous Color	Daylight	Natural White
Color Temperature (typ.)	6500 K	5000 K
Illuminance (typ.) (Center, at 24V DC)	1.0m	1200 lx
	2.0m	300 lx
Total Luminous Flux (typ.)	1300 lm	
Rated Voltage	24V DC (Polarized)	
Operating Voltage Range	24V DC $\pm 10\%$	
Rated Current Consumption	522 mA $\pm 10\%$	
Rated Power Consumption	12.5 W	
Operating Ambient Temperature	-40°C to +60°C	
Operating Ambient Humidity	Less than 90% (No condensation)	
Main Unit Material	Body : Stainless Steel Lens : Tempered Glass	
Mounting Location	Indoor	
Mounting Direction	All Directions	
Protection Rating	IP66G/67G (JIS C0920) / 69K (DIN 40050 part9)	
Environmental Condition	With the Recommended cables connected (Except Cable Terminal)	
Vibration Resistance	19.6 m/s ² (JIS C 0911-1984)	
Insulation Resistance	More than 5M Ω at 500VDC between live part and non-current carrying metallic part	
Withstand Voltage	500V AC applied for 1min between live part and non-current carrying metallic part without breaking insulation	
Mass (Tolerance $\pm 10\%$)	1490 g	
Outer Dimensions	Refer to the Outer Dimension Drawing	
Conformity Standards	EMC Directive (EN IEC 55015, EN 61000-6-2) RoHS Directive (EN IEC 63000)	
Remarks	<ul style="list-style-type: none"> • Conforms to the CE requirements • Specifications may change without notice due to continual product improvement. • Due to the inherent properties of the LED, color variations and hue may occur. • This product's illuminance may be affected when used in airtight conditions. • Model Number Configuration <div style="text-align: center; margin: 10px 0;"> <p>CLK3 - 24SG - </p> </div> <ul style="list-style-type: none"> ● Luminous Color CD : Daylight / CN : Natural White ● Main Unit Material SG : Body: Stainless Steel Lens: Tempered Glass ● Connector Specifications C : M12 Connector 	

指定公差 General Tolerance	角度公差 ±[°] Angular tolerance ±[°]			寸法公差 ±[mm] Dimensional tolerance ±[mm]					図番 Drawing No. 年月日 Date 改訂 Rev. 改訂履歴 Revisions		
	短辺長さ Length of short side	~	~100	6	30	120	300	1000			
	精 f	10	50	100	精 f	0.05	0.1	0.2		0.4	0.6
	粗 v	3	1.5	1	0.5	中 m	0.1	0.3		0.5	0.7
				粗 c	0.3	0.5	1	1.2	2		

図番 Drawing No. CLK3C-24SG-W18			ページ Page 2 / 2
改訂 Rev.	年月日 Date	改訂履歴 Revisions	



Note
1. For wiring, it is recommended to use the Recommended Cable.

Recommended Cable	Order No.	Model	Manufacturer
4-wire M12 SUS Socket Cable, 5m length	1454082	SAC-4P-5,0-28X/M12FS OD	Phoenix Contact Corp.

3	M12 Plug	1	
2	Glass (Lens)	1	Tempered Glass
1	Body	1	Stainless (SUS316 equivalent)
番号 No.	部品名 Part Name	数量 Qty.	記事 Remarks
機種 Model	CLK3C-24SG	特注No. S.P.No.	-
		図名 Name	Outer Dimensions Drawing
品目コード Part No.	-	尺度 Scale	三角法 3rd Angle P.
		単位 Unit	mm
		株式会社 パトライト PATLITE Corporation	